

Test Report

Report No.: U00021904091344

Query Password: QW2072

Date: Apr. 22, 2019

Page 1 of 20

Applicant: SHENZHEN ATTEN TECHNOLOGY CO., LTD.**Contact information:** 8F, Building 2, Senyang High-tech Park, 7 West Road High-tech Park, Guangming New District, Shenzhen, China.**The following sample(s) was (were) submitted and identified by client as:**

Sample Name : ST-80
Model No. : ST-80
Sample Received Date : Apr. 9, 2019
Testing Period : From Apr. 9, 2019 to Apr. 22, 2019
Test Request : Please refer to next page(s).
Test Result(s) : Please refer to next page(s).

Signed for and on behalf of Shen Zhen UONE Test Co., LTD.

Prepared by



Anna Li

Checked by



Nora Deng

Approved by



Pascal Shi

This report is valid only with a valid digital signature. The digital signature may be available only under the Adobe software above version 7.0.

Test Report

Report No.: U00021904091344

Query Password: QW2072

Date: Apr. 22, 2019

Page 2 of 20

.....

Summary of test results (Tested parts are required partially by client):

TEST REQUEST**CONCLUSION**

RoHS Directive 2011/65/EU and its subsequent amendments & Directive (EU) 2015/863

To determine Lead (Pb), Cadmium(Cd), Mercury(Hg), Hexavalent Chromium(Cr(VI)),

(1) Polybrominated Biphenyls (PBBs) and Polybrominated DiphenylEthers (PBDEs)
content by screening test and chemical test**PASS**

(2) To determine Phthalates (DBP, BBP, DEHP, DIBP) content by chemical test

PASS

.....

This report is valid only with a valid digital signature. The digital signature may be available only under the Adobe software above version 7.0.

Test Report

Report No.: U00021904091344

Query Password: QW2072

Date: Apr. 22, 2019

Page 3 of 20

Test Material List

Material No.	Description (Location)	Photo(s) of tested materials
1	White plastic (charging head)	
2	Copper metal (charging head)	
3	Black plastic (charging head)	
4	Black plastic thread cover (charging line)	
5	Brown plastic thread cover (charging line)	
6	Yellow with green plastic thread cover (charging line)	
7	Blue plastic thread cover (charging line)	
8	Copper metal (charging line)	
9	Silvery metal (charging head)	
10	Black plastic frame (charging head)	
11	Silvery metal (charging head)	
12	Black plastic (charging head)	
13	Black metal (pen stand)	
14	Silver metal (pen stand)	
15	Silver metal screw (pen holder)	
16	Yellow sponge (pen stand)	
17	Silver metal (pen)	
18	Black plastic (pen)	
19	Silver metal pin (pen)	
20	White plastic (pen)	
21	Black plastic (pen)	
22	White plastic thread cover (pen)	

This report is valid only with a valid digital signature. The digital signature may be available only under the Adobe software above version 7.0.

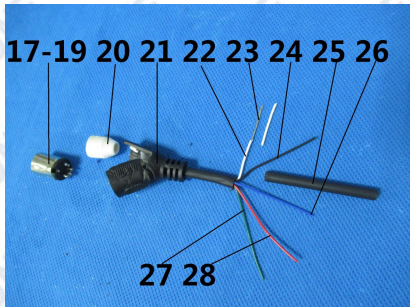
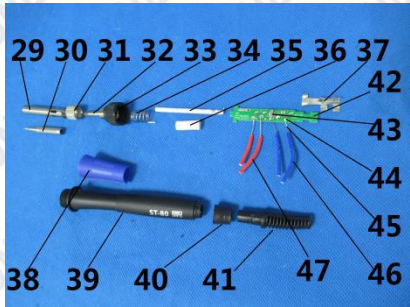
Test Report

Report No.: U00021904091344

Query Password: QW2072

Date: Apr. 22, 2019

Page 4 of 20

Material No.	Description (Location)	Photo(s) of tested materials
23	Silvery metal (pen)	 <p>17-19 20 21 22 23 24 25 26 27 28</p>
24	Black plastic thread cover (pen)	
25	Black plastic thread cover (pen)	
26	Blue plastic thread cover (pen)	
27	Dark green plastic thread cover (pen)	
28	Red plastic thread cover (pen)	
29	Silver metal (pen)	 <p>29 30 31 32 33 34 35 36 37 38 39 40 41 42 43 44 45 46 47</p>
30	Silver metal (pen)	
31	Silver metal ring (pen)	
32	Silver metal (pen)	
33	Slack plastic (pen)	
34	Silver metal spring (pen)	
35	White plastic (pen)	
36	White plastic (pen)	
37	Silver metal (pen)	
38	Blue plastic(pen)	
39	Black plastic(pen)	
40	Black plastic(pen)	
41	Black plastic(pen)	
42	Green PCB(pen)	
43	Grey plastic(PCB)	
44	Silvery solder(PCB)	
45	Silvery metal(PCB)	
46	Blue plastic(wire jacket, PCB)	
47	Red plastic(wire jacket, PCB)	

This report is valid only with a valid digital signature. The digital signature may be available only under the Adobe software above version 7.0.

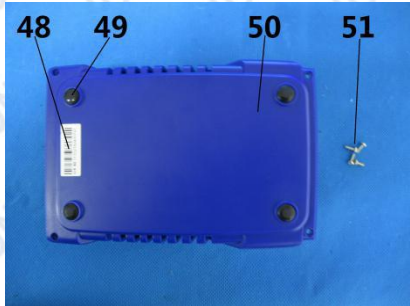
Test Report

Report No.: U00021904091344

Query Password: QW2072

Date: Apr. 22, 2019

Page 5 of 20

Material No.	Description (Location)	Photo(s) of tested materials
48	White plastic(label, ST-80)	
49	Black plastic(shell, ST-80)	
50	Blue plastic(shell, ST-80)	
51	Silvery metal(screw, ST-80)	
52	Yellow plastic(wire jacket, ST-80)	
53	Silvery metal(ST-80)	
54	Blue plastic(wire jacket, ST-80)	
55	Black plastic(wire jacket, ST-80)	
56	Red plastic(wire jacket, ST-80)	
57	Silvery metal(ST-80)	
58	Yellow/green plastic(ST-80)	
59	Silvery metal(ST-80)	
60	Yellow adhesive plastic(ST-80)	
61	Silvery metal(ST-80)	
62	White plastic(ST-80)	
63	White fabric(ST-80)	
64	White plastic(cable tie, ST-80)	
65	Grey paper(ST-80)	
66	Silvery metal(screw, ST-80)	
67	Silvery metal(big cushion, ST-80)	
68	Silvery metal(small cushion, ST-80)	
69	Silvery metal(foil, ST-80)	

This report is valid only with a valid digital signature. The digital signature may be available only under the Adobe software above version 7.0.

Test Report

Report No.: U00021904091344

Query Password: QW2072

Date: Apr. 22, 2019

Page 6 of 20

Material No.	Description (Location)	Photo(s) of tested materials
70	Yellow adhesive plastic(tape, ST-80)	
71	Blue adhesive plastic(tape, ST-80)	
72	Beige plastic(frame, ST-80)	
73	White plastic(label, ST-80)	
74	Grey metal(ST-80)	
75	Brown paper(ST-80)	
76	Yellow/translucent plastic(ST-80)	
77	Copper metal(ST-80)	
78	Black plastic(shell, ST-80)	
79	Transparent plastic(ST-80)	
80	Black plastic(bottom, ST-80)	
81	Silvery metal(ST-80)	
82	Black plastic(button, ST-80)	
83	Transparent plastic(ST-80)	
84	Silvery metal(plate, ST-80)	
85	Silvery metal(buckle, ST-80)	
86	Blue plastic(ST-80)	
87	Black plastic(ST-80)	
88	Silvery metal(ST-80)	
89	Silvery metal(ST-80)	
90	Black plastic(ST-80)	
91	Silvery metal(ST-80)	
92	Transparent glass(lens, ST-80)	
93	Silvery metal(wire, ST-80)	
94	Translucent soft plastic(ST-80)	
95	Silvery metal(screw, ST-80)	
96	Silvery metal(plate, ST-80)	
97	Lt blue/translucent plastic(ST-80)	

This report is valid only with a valid digital signature. The digital signature may be available only under the Adobe software above version 7.0.

Test Report

Report No.: U00021904091344

Query Password: QW2072

Date: Apr. 22, 2019

Page 7 of 20

Material No.	Description (Location)	Photo(s) of tested materials
98	Silvery metal(nut, PCB)	
99	Silvery metal(screw, PCB)	
100	Yellow adhesive plastic(label,PCB)	
101	Black plastic(label, PCB)	
102	Blue plastic(button,PCB)	
103	Silvery metal(pin, PCB)	
104	White plastic(PCB)	
105	Silvery metal(pin, PCB)	
106	Black plastic(PCB)	
107	Silvery metal(pin, PCB)	
108	Black plastic(PCB)	
109	Silvery metal(PCB)	
110	Silvery metal(screw, PCB)	
111	Silvery metal(PCB)	
112	White plastic(PCB)	
113	Black plastic(PCB)	
114	Silvery metal(pin, PCB)	
115	Black body(resistor, PCB)	
116	Black body(triode, PCB)	
117	Black body(diode, PCB)	
118	Black body(IC, PCB)	
119	Silvery metal(capacitor, PCB)	
120	Silvery metal(pin, capacitor, PCB)	
121	Black soft rubber(base, capacitor, PCB)	
122	Black soft plastic(film, capacitor, PCB)	
123	Brown paper(film, capacitor, PCB)	
124	Silvery metal(foil, capacitor, PCB)	
125	Dull silvery metal(foil, capacitor, PCB)	

This report is valid only with a valid digital signature. The digital signature may be available only under the Adobe software above version 7.0.

Test Report

Report No.: U00021904091344

Query Password: QW2072

Date: Apr. 22, 2019

Page 8 of 20

Material No.	Description (Location)	Photo(s) of tested materials
126	Black body(resistor, PCB)	
127	White body(IC, PCB)	
128	Black plastic(EC, PCB)	
129	Brown body(capacitor, PCB)	
130	Transparent plastic(led cover, screen)	
131	Silvery metal(pin, screen)	
132	Coppery metal(screen)	
133	Silvery metal(screw, screen)	
134	White plastic(label, screen)	
135	Black plastic(screen)	
136	Black plastic(screen)	
137	Silvery metal(pin, screen)	
138	Off white plastic(film, screen)	
139	Transparent plastic(sheet, screen)	
140	Grey plastic(film, screen)	
141	Transparent plastic(lens, screen)	
142	Black adhesive plastic(film, screen)	
143	Black plastic(frame, screen)	

This report is valid only with a valid digital signature. The digital signature may be available only under the Adobe software above version 7.0.

Test Report

Report No.: U00021904091344

Query Password: QW2072

Date: Apr. 22, 2019

Page 9 of 20

Test Result(s):

(1) Lead (Pb), Cadmium(Cd), Mercury(Hg), Hexavalent Chromium(Cr(VI)), Polybrominated Biphenyls (PBBs) and Polybrominated DiphenylEthers (PBDEs)

Test Method: IEC62321-3-1: 2013, IEC62321-4: 2013+A1:2017, IEC62321-5: 2013, IEC62321-6: 2015, IEC 62321-7-1:2015, IEC 62321-7-2: 2017, analyzed by EDXRF & ICP-OES & GC-MS & UV-Vis.

No.	EDXRF Result ⁽¹⁾					Chemical Result ⁽²⁾ (mg/kg)	Remark ⁽³⁾	Conclusion
	Pb	Cd	Hg	Cr	Br			
1	BL	BL	BL	BL	BL	—	—	PASS
2	BL	BL	BL	BL	NA	—	—	PASS
3	BL	BL	BL	BL	BL	—	—	PASS
4	BL	BL	BL	BL	BL	—	—	PASS
5	BL	BL	BL	BL	BL	—	—	PASS
6	BL	BL	BL	BL	BL	—	—	PASS
7	BL	BL	BL	BL	BL	—	—	PASS
8	BL	BL	BL	BL	NA	—	—	PASS
9	BL	BL	BL	BL	NA	—	—	PASS
10	BL	BL	BL	BL	BL	—	—	PASS
11	BL	BL	BL	BL	NA	—	—	PASS
12	BL	BL	BL	BL	BL	—	—	PASS
13	BL	BL	BL	BL	NA	—	—	PASS
14	BL	BL	BL	BL	NA	—	—	PASS
15	BL	BL	BL	BL	NA	—	—	PASS
16	BL	BL	BL	BL	BL	—	—	PASS
17	BL	BL	BL	BL	NA	—	—	PASS
18	BL	BL	BL	BL	BL	—	—	PASS
19	BL	BL	BL	BL	NA	—	—	PASS
20	BL	BL	BL	BL	BL	—	—	PASS
21	BL	BL	BL	BL	BL	—	—	PASS
22	BL	BL	BL	BL	BL	—	—	PASS
23	BL	BL	BL	BL	NA	—	—	PASS

This report is valid only with a valid digital signature. The digital signature may be available only under the Adobe software above version 7.0.

Test Report

Report No.: U00021904091344

Query Password: QW2072

Date: Apr. 22, 2019

Page 10 of 20

No.	EDXRF Result ⁽¹⁾					Chemical Result ⁽²⁾ (mg/kg)	Remark ⁽³⁾	Conclusion
	Pb	Cd	Hg	Cr	Br			
24	BL	BL	BL	BL	BL	—	—	PASS
25	BL	BL	BL	BL	BL	—	—	PASS
26	BL	BL	BL	BL	BL	—	—	PASS
27	BL	BL	BL	BL	BL	—	—	PASS
28	BL	BL	BL	BL	BL	—	—	PASS
29	BL	BL	BL	BL	NA	—	—	PASS
30	BL	BL	BL	BL	NA	—	—	PASS
31	BL	BL	BL	BL	NA	—	—	PASS
32	BL	BL	BL	BL	NA	—	—	PASS
33	BL	BL	BL	BL	BL	—	—	PASS
34	BL	BL	BL	BL	NA	—	—	PASS
35	BL	BL	BL	BL	BL	—	—	PASS
36	BL	BL	BL	BL	BL	—	—	PASS
37	BL	BL	BL	BL	NA	—	—	PASS
38	BL	BL	BL	BL	BL	—	—	PASS
39	BL	BL	BL	BL	BL	—	—	PASS
40	BL	BL	BL	BL	BL	—	—	PASS
41	BL	BL	BL	BL	BL	—	—	PASS
42	BL	BL	BL	BL	BL	—	—	PASS
43	BL	BL	BL	BL	BL	—	—	PASS
44	BL	BL	BL	BL	NA	—	—	PASS
45	BL	BL	BL	BL	NA	—	—	PASS
46	BL	BL	BL	BL	BL	—	—	PASS
47	BL	BL	BL	BL	BL	—	—	PASS
48	BL	BL	BL	BL	BL	—	—	PASS
49	BL	BL	BL	BL	BL	—	—	PASS
50	BL	BL	BL	BL	BL	—	—	PASS

This report is valid only with a valid digital signature. The digital signature may be available only under the Adobe software above version 7.0.

Test Report

Report No.: U00021904091344

Query Password: QW2072

Date: Apr. 22, 2019

Page 11 of 20

No.	EDXRF Result ⁽¹⁾					Chemical Result ⁽²⁾ (mg/kg)	Remark ⁽³⁾	Conclusion
	Pb	Cd	Hg	Cr	Br			
51	BL	BL	BL	BL	NA	—	—	PASS
52	BL	BL	BL	BL	BL	—	—	PASS
53	BL	BL	BL	BL	NA	—	—	PASS
54	BL	BL	BL	BL	BL	—	—	PASS
55	BL	BL	BL	BL	BL	—	—	PASS
56	BL	BL	BL	BL	BL	—	—	PASS
57	BL	BL	BL	BL	NA	—	—	PASS
58	BL	BL	BL	BL	BL	—	—	PASS
59	BL	BL	BL	BL	NA	—	—	PASS
60	BL	BL	BL	BL	BL	—	—	PASS
61	BL	BL	BL	BL	NA	—	—	PASS
62	BL	BL	BL	BL	BL	—	—	PASS
63	BL	BL	BL	BL	BL	—	—	PASS
64	BL	BL	BL	BL	BL	—	—	PASS
65	BL	BL	BL	BL	BL	—	—	PASS
66	BL	BL	BL	BL	NA	—	—	PASS
67	BL	BL	BL	BL	NA	—	—	PASS
68	BL	BL	BL	BL	NA	—	—	PASS
69	BL	BL	BL	BL	NA	—	—	PASS
70	BL	BL	BL	BL	BL	—	—	PASS
71	BL	BL	BL	BL	BL	—	—	PASS
72	BL	BL	BL	BL	BL	—	—	PASS
73	BL	BL	BL	BL	BL	—	—	PASS
74	BL	BL	BL	BL	NA	—	—	PASS
75	BL	BL	BL	BL	BL	—	—	PASS
76	BL	BL	BL	BL	BL	—	—	PASS
77	BL	BL	BL	BL	NA	—	—	PASS

This report is valid only with a valid digital signature. The digital signature may be available only under the Adobe software above version 7.0.

Test Report

Report No.: U00021904091344

Query Password: QW2072

Date: Apr. 22, 2019

Page 12 of 20

No.	EDXRF Result ⁽¹⁾					Chemical Result ⁽²⁾ (mg/kg)	Remark ⁽³⁾	Conclusion
	Pb	Cd	Hg	Cr	Br			
78	BL	BL	BL	BL	BL	—	—	PASS
79	BL	BL	BL	BL	BL	—	—	PASS
80	BL	BL	BL	BL	BL	—	—	PASS
81	BL	BL	BL	BL	NA	—	—	PASS
82	BL	BL	BL	BL	BL	—	—	PASS
83	BL	BL	BL	BL	BL	—	—	PASS
84	BL	BL	BL	BL	NA	—	—	PASS
85	BL	BL	BL	BL	NA	—	—	PASS
86	BL	BL	BL	BL	BL	—	—	PASS
87	BL	BL	BL	BL	BL	—	—	PASS
88	BL	BL	BL	BL	NA	—	—	PASS
89	BL	BL	BL	BL	NA	—	—	PASS
90	BL	BL	BL	BL	BL	—	—	PASS
91	BL	BL	BL	BL	NA	—	—	PASS
92	BL	BL	BL	BL	BL	—	—	PASS
93	BL	BL	BL	BL	NA	—	—	PASS
94	BL	BL	BL	BL	BL	—	—	PASS
95	BL	BL	BL	BL	NA	—	—	PASS
96	BL	BL	BL	BL	NA	—	—	PASS
97	BL	BL	BL	BL	BL	—	—	PASS
98	BL	BL	BL	BL	NA	—	—	PASS
99	BL	BL	BL	BL	NA	—	—	PASS
100	BL	BL	BL	BL	BL	—	—	PASS
101	BL	BL	BL	BL	BL	—	—	PASS
102	BL	BL	BL	BL	BL	—	—	PASS
103	BL	BL	BL	BL	NA	—	—	PASS
104	BL	BL	BL	BL	BL	—	—	PASS

This report is valid only with a valid digital signature. The digital signature may be available only under the Adobe software above version 7.0.

Test Report

Report No.: U00021904091344

Query Password: QW2072

Date: Apr. 22, 2019

Page 13 of 20

No.	EDXRF Result ⁽¹⁾					Chemical Result ⁽²⁾ (mg/kg)	Remark ⁽³⁾	Conclusion
	Pb	Cd	Hg	Cr	Br			
105	BL	BL	BL	BL	NA	—	—	PASS
106	BL	BL	BL	BL	BL	—	—	PASS
107	BL	BL	BL	BL	NA	—	—	PASS
108	BL	BL	BL	BL	BL	—	—	PASS
109	BL	BL	BL	BL	NA	—	—	PASS
110	BL	BL	BL	BL	NA	—	—	PASS
111	BL	BL	BL	BL	NA	—	—	PASS
112	BL	BL	BL	BL	BL	—	—	PASS
113	BL	BL	BL	BL	BL	—	—	PASS
114	BL	BL	BL	BL	NA	—	—	PASS
115	BL	BL	BL	BL	BL	—	—	PASS
116	BL	BL	BL	BL	BL	—	—	PASS
117	BL	BL	BL	BL	BL	—	—	PASS
118	BL	BL	BL	BL	BL	—	—	PASS
119	BL	BL	BL	BL	NA	—	—	PASS
120	BL	BL	BL	BL	NA	—	—	PASS
121	BL	BL	BL	BL	BL	—	—	PASS
122	BL	BL	BL	BL	BL	—	—	PASS
123	BL	BL	BL	BL	BL	—	—	PASS
124	BL	BL	BL	BL	NA	—	—	PASS
125	BL	BL	BL	BL	NA	—	—	PASS
126	BL	BL	BL	BL	BL	—	—	PASS
127	BL	BL	BL	BL	BL	—	—	PASS
128	BL	BL	BL	BL	BL	—	—	PASS
129	BL	BL	BL	BL	BL	—	—	PASS
130	BL	BL	BL	BL	BL	—	—	PASS
131	BL	BL	BL	BL	NA	—	—	PASS

This report is valid only with a valid digital signature. The digital signature may be available only under the Adobe software above version 7.0.

Test Report

Report No.: U00021904091344

Query Password: QW2072

Date: Apr. 22, 2019

Page 14 of 20

No.	EDXRF Result ⁽¹⁾					Chemical Result ⁽²⁾ (mg/kg)	Remark ⁽³⁾	Conclusion
	Pb	Cd	Hg	Cr	Br			
132	OL	BL	BL	BL	NA	Pb: 24350#	Copper alloy	PASS
133	BL	BL	BL	BL	NA	—	—	PASS
134	BL	BL	BL	BL	BL	—	—	PASS
135	BL	BL	BL	BL	BL	—	—	PASS
136	BL	BL	BL	BL	BL	—	—	PASS
137	BL	BL	BL	BL	NA	—	—	PASS
138	BL	BL	BL	BL	BL	—	—	PASS
139	BL	BL	BL	BL	BL	—	—	PASS
140	BL	BL	BL	BL	BL	—	—	PASS
141	BL	BL	BL	BL	BL	—	—	PASS
142	BL	BL	BL	BL	BL	—	—	PASS
143	BL	BL	BL	BL	BL	—	—	PASS

Remark:

- (1) ① Results are obtained by EDXRF for primary screening, and further wet chemical testing by ICP-OES (for Cd, Pb, Hg), UV-VIS (for Cr(VI)) and GC/MS (for PBBs, PBDEs) is recommended to be performed, if an inconclusive result was found (as "X" in below table) (unit: mg/kg).
- ② OL = Over Limit, BL = Below Limit, X = Inconclusive, NA = Not Applicable.
- ③ The EDXRF screening test for RoHS elements – The reading may be different to the actual content in the sample be of non-uniformity composition.

Element	Polymer	Metal	Composite Materials
Cd	$BL \leq (70-3\sigma) < X < (130+3\sigma) \leq OL$	$BL \leq (70-3\sigma) < X < (130+3\sigma) \leq OL$	$LOD < X < (150+3\sigma) \leq OL$
Pb	$BL \leq (700-3\sigma) < X < (1300+3\sigma) \leq OL$	$BL \leq (700-3\sigma) < X < (1300+3\sigma) \leq OL$	$BL \leq (500-3\sigma) < X < (1500+3\sigma) \leq OL$
Hg	$BL \leq (700-3\sigma) < X < (1300+3\sigma) \leq OL$	$BL \leq (700-3\sigma) < X < (1300+3\sigma) \leq OL$	$BL \leq (500-3\sigma) < X < (1500+3\sigma) \leq OL$
Br	$BL \leq (300-3\sigma) < X$	NA	$BL \leq (250-3\sigma) < X$
Cr	$BL \leq (700-3\sigma) < X$	$BL \leq (700-3\sigma) < X$	$BL \leq (500-3\sigma) < X$

Units and limits in EU RoHS Directive 2011/65/EU:

This report is valid only with a valid digital signature. The digital signature may be available only under the Adobe software above version 7.0.

Test Report

Report No.: U00021904091344

Query Password: QW2072

Date: Apr. 22, 2019

Page 15 of 20

Element	Pb	Cd	Hg	Cr(VI)	PBBs(single)	PBDEs(single)
Unit	mg/kg	mg/kg	mg/kg	mg/kg	mg/kg	mg/kg
Limit	1000	100	1000	1000	1000	1000

(2) ① mg/kg = ppm = 0.0001%, N.D. = Not Detected (Less than RL).

② Unit and RL (Report limit) in wet chemical test.

Element	Pb	Cd	Hg	Cr(VI)	PBBs(single)	PBDEs(single)
Unit	mg/kg	mg/kg	mg/kg	mg/kg	mg/kg	mg/kg
RL	2	2	2	2	5	5

③ According to IEC 62321-7-1:2015, result on Cr(VI) for metal sample is shown as Positive/Negative. Negative = Absence of Cr(VI) coating, Positive = Presence of Cr(VI) coating.

Storage condition and production date of the tested sample are unavailable and thus results of Cr(VI) represent status of the sample at the time of testing.

④ According to IEC 62321-3-1:2013, this column represents the results of wet chem test.

(3) This column represents the exempted decoration of material or other related testing sample's information.

According to the declaration from the client, Lead in specimen(s) is exempted by EU RoHS Directive 2011/65/EU and its amendment Directive EU 2015/863 base on:

Copper alloy containing up to 4 % lead by weight.

(2) Phthalates (DBP, BBP, DEHP, DIBP) content

Test Method: IEC 62321-8: 2017, analyzed by gas chromatographic- mass spectrometer (GC-MS).

Substances	DBP	BBP	DEHP	DIBP	Conclusion
CAS No.	84-74-2	85-68-7	117-81-7	84-69-5	
Limit (mg/kg)	1000	1000	1000	1000	
RL (mg/kg)	30	30	30	30	
Material No.	Result (mg/kg)				
1	N.D.	N.D.	N.D.	N.D.	PASS
3	N.D.	N.D.	N.D.	N.D.	PASS
4	N.D.	N.D.	N.D.	N.D.	PASS
5	N.D.	N.D.	N.D.	N.D.	PASS
6	N.D.	N.D.	N.D.	N.D.	PASS

This report is valid only with a valid digital signature. The digital signature may be available only under the Adobe software above version 7.0.

Test Report

Report No.: U00021904091344

Query Password: QW2072

Date: Apr. 22, 2019

Page 16 of 20

Substances	DBP	BBP	DEHP	DIBP	Conclusion
CAS No.	84-74-2	85-68-7	117-81-7	84-69-5	
Limit (mg/kg)	1000	1000	1000	1000	
RL (mg/kg)	30	30	30	30	
Material No.	Result (mg/kg)				
7	N.D.	N.D.	N.D.	N.D.	PASS
10	N.D.	N.D.	N.D.	N.D.	PASS
12	N.D.	N.D.	N.D.	N.D.	PASS
18	N.D.	N.D.	N.D.	N.D.	PASS
20	N.D.	N.D.	N.D.	N.D.	PASS
21	N.D.	N.D.	N.D.	N.D.	PASS
22	N.D.	N.D.	N.D.	N.D.	PASS
24	N.D.	N.D.	N.D.	N.D.	PASS
25	N.D.	N.D.	N.D.	N.D.	PASS
26	N.D.	N.D.	N.D.	N.D.	PASS
27	N.D.	N.D.	N.D.	N.D.	PASS
28	N.D.	N.D.	N.D.	N.D.	PASS
33	N.D.	N.D.	N.D.	N.D.	PASS
35	N.D.	N.D.	N.D.	N.D.	PASS
36	N.D.	N.D.	N.D.	N.D.	PASS
38	N.D.	N.D.	N.D.	N.D.	PASS
39	N.D.	N.D.	N.D.	N.D.	PASS
40	N.D.	N.D.	N.D.	N.D.	PASS
41	N.D.	N.D.	N.D.	N.D.	PASS
46	N.D.	N.D.	N.D.	N.D.	PASS
47	N.D.	N.D.	N.D.	N.D.	PASS
48	N.D.	N.D.	N.D.	N.D.	PASS
49	N.D.	N.D.	N.D.	N.D.	PASS
50	N.D.	N.D.	N.D.	N.D.	PASS

This report is valid only with a valid digital signature. The digital signature may be available only under the Adobe software above version 7.0.

Test Report

Report No.: U00021904091344

Query Password: QW2072

Date: Apr. 22, 2019

Page 17 of 20

Substances	DBP	BBP	DEHP	DIBP	Conclusion
CAS No.	84-74-2	85-68-7	117-81-7	84-69-5	
Limit (mg/kg)	1000	1000	1000	1000	
RL (mg/kg)	30	30	30	30	
Material No.	Result (mg/kg)				
52	N.D.	N.D.	N.D.	N.D.	PASS
54	N.D.	N.D.	N.D.	N.D.	PASS
55	N.D.	N.D.	N.D.	N.D.	PASS
56	N.D.	N.D.	N.D.	N.D.	PASS
58	N.D.	N.D.	N.D.	N.D.	PASS
60	N.D.	N.D.	N.D.	N.D.	PASS
62	N.D.	N.D.	N.D.	N.D.	PASS
64	N.D.	N.D.	N.D.	N.D.	PASS
70	N.D.	N.D.	N.D.	N.D.	PASS
71	N.D.	N.D.	N.D.	N.D.	PASS
72	N.D.	N.D.	N.D.	N.D.	PASS
73	N.D.	N.D.	N.D.	N.D.	PASS
78	N.D.	N.D.	N.D.	N.D.	PASS
80	N.D.	N.D.	N.D.	N.D.	PASS
82	N.D.	N.D.	N.D.	N.D.	PASS
83	N.D.	N.D.	N.D.	N.D.	PASS
86	N.D.	N.D.	N.D.	N.D.	PASS
87	N.D.	N.D.	N.D.	N.D.	PASS
90	N.D.	N.D.	N.D.	N.D.	PASS
94	N.D.	N.D.	N.D.	N.D.	PASS
102	N.D.	N.D.	N.D.	N.D.	PASS
104	N.D.	N.D.	N.D.	N.D.	PASS
106	N.D.	N.D.	N.D.	N.D.	PASS
108	N.D.	N.D.	N.D.	N.D.	PASS

This report is valid only with a valid digital signature. The digital signature may be available only under the Adobe software above version 7.0.

Test Report

Report No.: U00021904091344

Query Password: QW2072

Date: Apr. 22, 2019

Page 18 of 20

Substances	DBP	BBP	DEHP	DIBP	Conclusion
CAS No.	84-74-2	85-68-7	117-81-7	84-69-5	
Limit (mg/kg)	1000	1000	1000	1000	
RL (mg/kg)	30	30	30	30	
Material No.	Result (mg/kg)				
112	N.D.	N.D.	N.D.	N.D.	PASS
113	N.D.	N.D.	N.D.	N.D.	PASS
130	N.D.	N.D.	N.D.	N.D.	PASS
134	N.D.	N.D.	N.D.	N.D.	PASS
135	N.D.	N.D.	N.D.	N.D.	PASS
136	N.D.	N.D.	N.D.	N.D.	PASS
138	N.D.	N.D.	N.D.	N.D.	PASS
139	N.D.	N.D.	N.D.	N.D.	PASS
140	N.D.	N.D.	N.D.	N.D.	PASS
142	N.D.	N.D.	N.D.	N.D.	PASS
143	N.D.	N.D.	N.D.	N.D.	PASS

- Note:**
1. mg/kg = milligram per kilogram (ppm).
 2. RL = report limit.
 3. N.D.=not detected(less than RL).

This report is valid only with a valid digital signature. The digital signature may be available only under the Adobe software above version 7.0.

Test Report

Report No.: U00021904091344

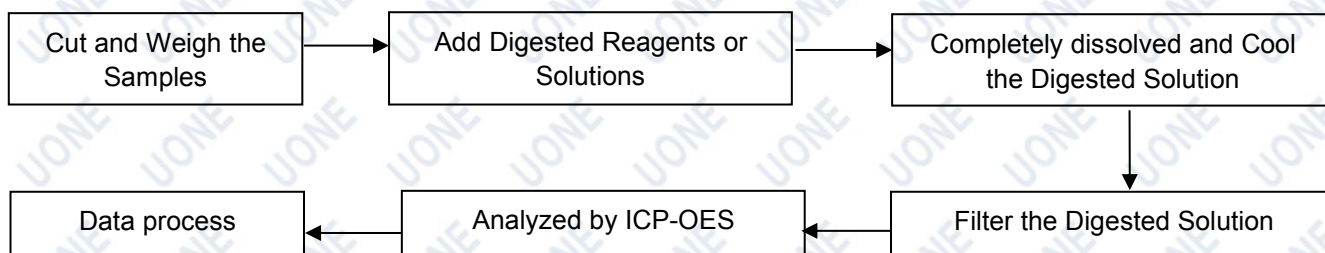
Query Password: QW2072

Date: Apr. 22, 2019

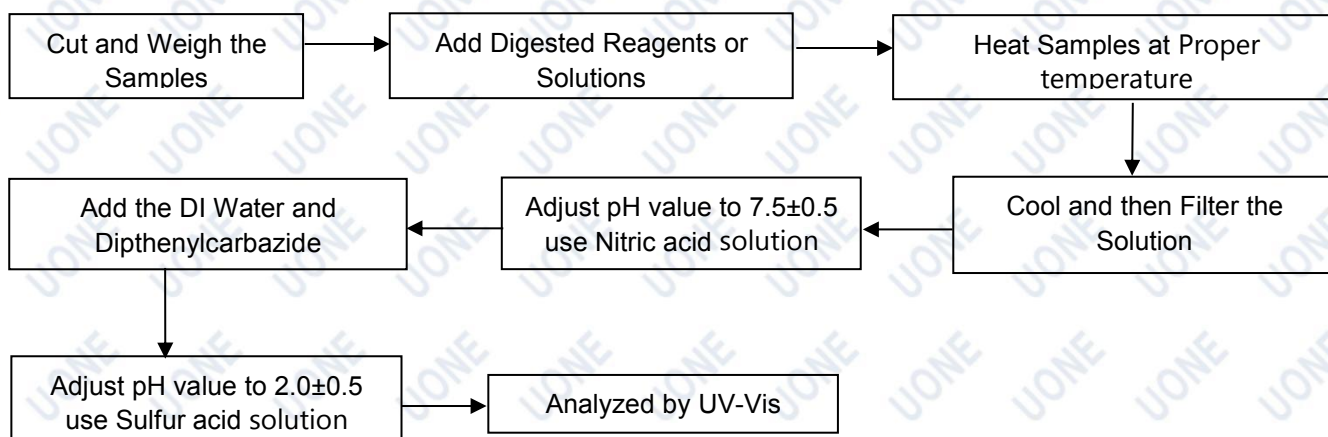
Page 19 of 20

Test Process Flow

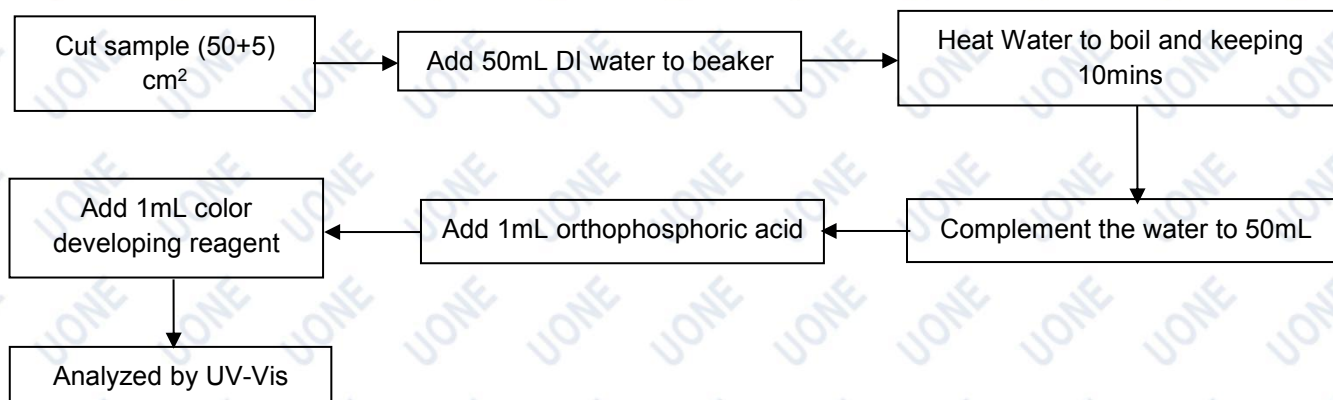
1. Lead, Cadmium, Mercury



2. Hexavalent Chromium (Non-metal)



Hexavalent Chromium (Metal)



This report is valid only with a valid digital signature. The digital signature may be available only under the Adobe software above version 7.0.

Test Report

Report No.: U00021904091344

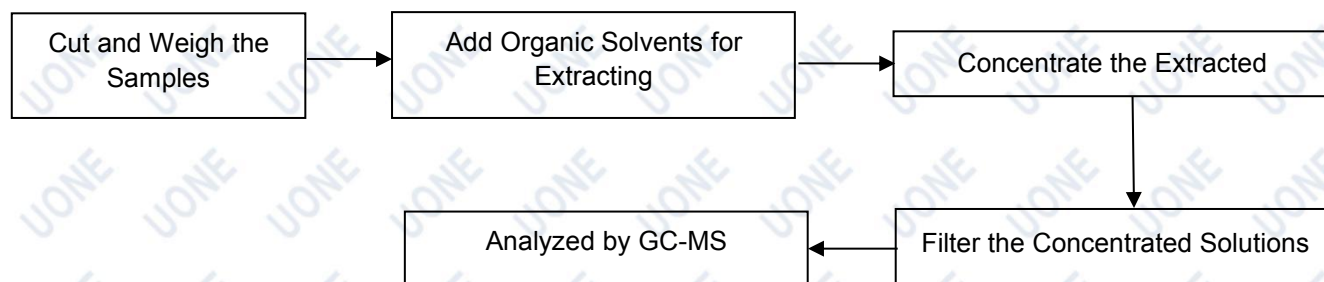
Query Password: QW2072

Date: Apr. 22, 2019

Page 20 of 20

Test Process Flow (Continued):

3. PBBs & PBDEs, Phthalates



Photo(s) of Sample:



End of Report

This report is considered invalidated without the Special Seal for Inspection of the UONE, This report shall not be altered, increased or deleted. The results shown in this test report refer only to the sample tested. Without written approval of UONE, this report shall not be copied and published as advertisement.

This report is valid only with a valid digital signature. The digital signature may be available only under the Adobe software above version 7.0.